

WASHWORLD

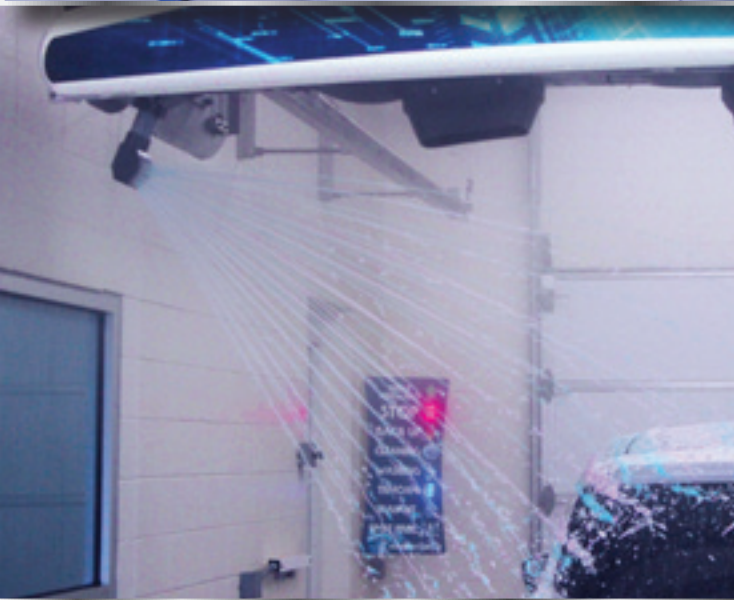
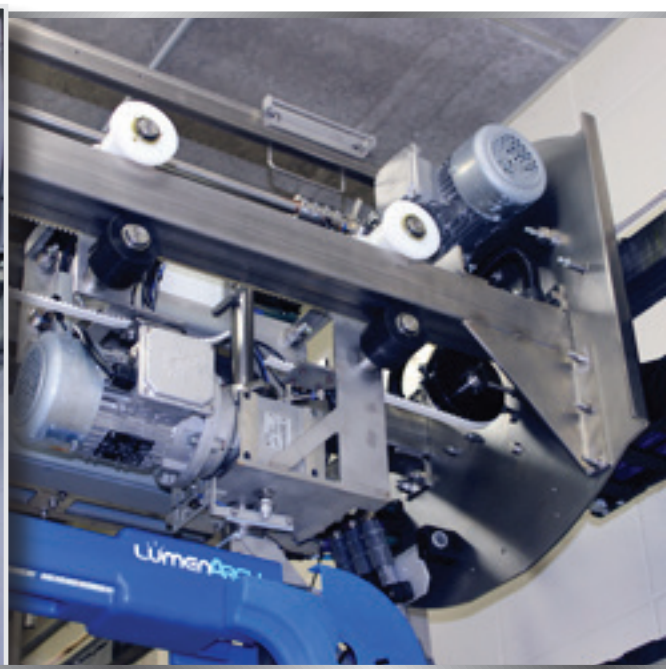


WASHWORLD

RAZOR XR-7

STOP
BACK UP
CLEANING
WASHING
DRY-ING
SEALANT
SPOT FREE

RAZOR XR-7

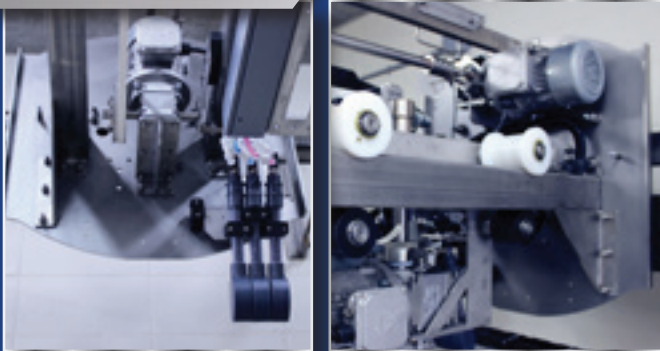


REVOLUTIONARY DESIGN

Washworld's Razor® XR-7 has all of the best of what makes Razor® unique, but at a lower price point. Razor XR-7 keeps costs down however still maintains the highest standards of quality. For longevity, stainless steel is an important part of Razor XR-7. With a wide range of options available, Razor XR-7 is the complete package!

STANDARD ON RAZOR XR-7

Stainless Steel



Without a doubt, the most durable material for use in a car wash. When other manufacturers are using cheaper, less durable materials in their machines, Washworld refuses to compromise on quality and uses stainless steel throughout the Razor XR-7 wash system.

Advanced Drive Motion Technology

Razor XR-7's belt drive utilizes multiple variable frequency drive technology with a clean and simple design. Radial motion provides a smooth, precise application of all solutions and water. What does this mean for you? Fewer moving components, less weight, reduced maintenance and a quicker return on investment!

Energy Chain



Razor XR-7's revolutionary cable carrier protects moving cables and hoses from abrasion and entanglement. Energy Chain also provides controlled bend radius of cables and hoses to prevent pinching or kinking. Energy Chain's non-metallic construction ensures quiet performance, longer cable life, and extended supply line life.

Cutting Edge Spray Arch Cover



The vibrant blue, rotationally molded polyethylene arch cover catches the eye of the customer while 7 top and 14 side nozzles provide excellent coverage that they will appreciate. Protective polyethylene cross-link face foam gives added protection.

Visorclean



Stainless steel v-jet nozzles are strategically placed on the spray arch to clean even the hardest of places... under the rear window visor!

Buy-Up Option



Four customizable buy-up options allow your Auto Cashier to up-sell for you which renders greater wash package flexibility and maximized profits!



QUICKER RETURN ON INVESTMENT

Energy efficient motors save on operating costs. Reduced rolling resistance results in improved efficiency. No wasted product, reduced water consumption, increase throughput, and lower operating costs all add up to a higher and faster return on investment!

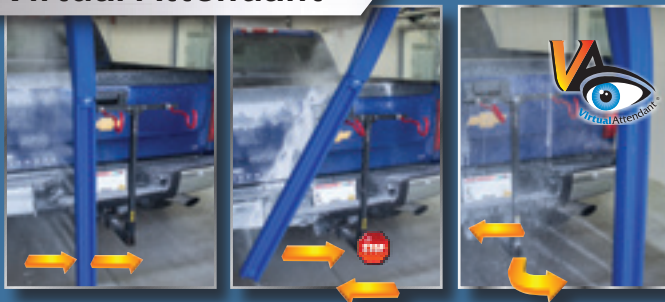
STANDARD ON RAZOR XR-7

VS²® (Vehicle Sizing System)



Your customers will appreciate the wide open feel of the wash bay. Razor XR-7's VS²® is a safe, simple and reliable vehicle positioning system which provides your customers with a friendly, open wash bay without guide rails, floor treadles or T-bars. To increase customer comfort, Razor XR-7 utilizes a bay guide reflector system to outline vehicle travel, day or night. Razor XR-7's VS² provides exceptional cleaning by consistently measuring front, rear and both sides of vehicles to maintain the optimum distance between the arch and the vehicle for most effective cleaning. Smooth radial wash motion ensures complete vehicle coverage.

Virtual Attendant®



Washworld's patented Virtual Attendant® technology enables the Razor XR-7 to maneuver around obstacles such as wide mirrors, rear mounted bike racks and extended trailer hitches which often render other washes inoperable. Virtual Attendant automatically compensates for the obstacle thereby allowing the wash to be completed. This means no down time, no attendant and no more trips to the site to reset the wash! Best of all... it's standard on every Razor XR-7 wash!

Reduced Maintenance



Sealed gearboxes eliminate the need for oil changes. Reduced weight and less motion equal less wear and tear. High quality, premium components and materials withstand the harsh wash bay conditions resulting in a longer life. No wasted products, reduced maintenance and increased throughput provide a quicker return on investment.

Washview® On-Site



WASHVIEW
ON-SITE



Push Button Control Enclosure

With Razor XR-7's standard Washview® On-Site, a color touch screen gives you complete access to Razor XR-7, including programming, maintenance, diagnostics, and wash counts. No on-site PC or laptop is needed to configure your wash. Razor XR-7 also features a comprehensive integrated security system which can monitor auto cashiers, doors, fluid levels and more. In addition, the Wash Package Storage capability allows for up to 12 wash packages to be retained, which can be quickly copied to the immediate wash setup.

THE COMPLETE PACKAGE

OPTIONAL ON RAZOR XR - 7

ESD - Extended Solutions Delivery

Tri-Color foam
Tri-Color foam weep water
(ESD with cold climate)
Low pressure #3
High pressure drying agent / sealant
High pressure drying agent / sealant
Low pressure #1
Low pressure foam polish
Low pressure #2



ESD provides the optional extra services your customers will rave about and be an easy up-sell option to increase your revenue stream. ESD includes an additional single low pressure and single high pressure application and Tri-Color Foam. Adding Washworld's ESD option to your Razor XR-7 is an easy decision to make!

Power Tower Wheel Cleaner®



Effective wheel cleaning that will keep your customers coming back! The 40" high tower features 4 stainless steel zero degree rotating turbo nozzles, providing intense cleaning as well as great customer appeal. Power Tower Wheel Cleaner manifolds are fabricated completely from stainless steel and wrapped in a vibrant blue, rotationally molded polyethylene cover. Available with or without eye-catching blue LEDs. Not only is the Power Tower Wheel Cleaner effective for wheel cleaning, but it is great for removing snow and ice from rocker panels and running boards!

Undercarriage & Rocker Panel Blaster

The undercarriage and rocker panel blaster is specially designed to thoroughly attack any dirt, debris and snow on the lower portion of your vehicle. The undercarriage and rocker panel blaster consists of 11 stainless steel nozzles; 3 on the undercarriage and 4 on each rocker panel blaster.

SpectraRay+™



SpectraRay+™ floods the wash bay with red, magenta, blue and green creating an ultimate light show that customers won't forget! It includes an adjustable stainless steel stationary wall mounted system, bringing the intense light show to eye level. SpectraRay+ can be programmed to sequence through flashing colors for an intense experience or switch to a steady color at any point to coincide with your wash package.

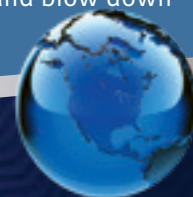
Tri-Color Foam



There is simply no better Tri-Color foam application available! Washworld's optional ESD/Tri-Color foam features completely adjustable nozzles for coverage the way you want it, where you want it. Foaming heads can be positioned individually allowing unlimited flexibility.

Tri-Color Foam - Freeze Protection

For cold climates there is the Tri-Color foam with freeze protection option that also includes additional single high and low pressure applications. Finally, a cost effective means of protecting your Tri-Color foam system utilizing heat and weep or heat and blow down capabilities to prevent freezing without the typical extreme water usage of other systems.



THE RAZOR® XR-7 ADVANTAGE

O P T I O N A L O N R A Z O R X R - 7

Chem Alert™



**CHEM
ALERT**

Monitoring your chemical levels has never been easier! Washworld's chemical monitoring system allows you to remotely monitor up to 16 different product levels by utilizing an adjustable capacitive sensor that is mounted to each chemical container. The adjustable low level triggers an alert on the Washview® and a notification is conveniently sent via email or text. Monitoring your chemical levels helps you to reduce system downtime and ensures your car wash is running smoothly.

Voice Prompts



Your customers will never need to guess what to do next with Razor XR-7's voice prompts. Audible instructions and information are linked to Razor XR-7's instructional signage. The voice prompts come standard in English, however is customizable for other languages.

LumenArch™



LumenArch includes over 300 dazzling blue LEDs that create an eye-catching glow of the spray arch. The LEDs illuminate the product being applied as well as the interior of the vehicle. While idle, the constant eye-catching glow fills the wash bay to attract customers.

Washview® Mobile



WASHVIEW
MOBILE

Washworld's optional Washview® Mobile provides virtually the same technologies as Washview® On-Site (standard), however it allows you to access and control Razor XR-7 from anywhere in the world via a high speed Internet connection. Washview Mobile uses the Vijeo Design'Air app (purchased separately) for your smart phone or tablet to give you mirror image access of your HMI. It even gives you the ability to receive text or email notifications to keep you fully informed!

HEAVY DUTY PUMP STATION

Washworld's Pump Station features a poly tank, two pre-soaks, one additional low pressure product application and one high pressure product application standard. For locations without an equipment room, the In-Bay Pump Station offers the same cutting edge technology incorporated in a space saving design to be located directly in your wash bay. Featuring one piece heavy duty construction, it is designed for long life in even the harshest of conditions.

Heavy Duty Pump Station



Standard Features

- Space saving design, simple installation, easy to maintain
- Heavy duty powder coated frame utilizes proven protective primer
- General Pump - Emperor HTCK40
- Two pre-soaks, additional single low pressure, single high pressure applications available
- One piece rotationally molded corrosion proof MDPE tank
- Resource conservation system lowers water consumption
- Direct feed solutions system provides more control
- Stainless steel chemical manifold
- Stainless steel / composite direct feed chemical delivery system
- 25 HP premium high efficiency ODP motor

Options

- Cat 3535 pump option (replaces General Pump - Emperor HTCK40)
- ESD - Extended Solution Delivery option includes: Tri-Color foam, (1) additional low pressure, (1) additional high pressure for sealant / drying agent applications
- Cold climate package - heat and weep
- Cold climate package - heat and air blow down
- Cold climate package - weep only
- Cold climate package - heat only
- Dual inlet low pressure source selection valve and control hot and cold
- Spot free re-pressurization system
- Reclaim system adapter kit
- Dual port injector system

In-Bay Pump Station



Standard Features

- Simple to install, space saving design: 37"H x 96"L x 26"D
- Deluxe cover package with enclosed base protects equipment and looks great in your bay
- Removable panels allow for complete access and easy maintenance
- Heavy duty powder coated frame utilizes proven protective primer
- General Pump - Emperor HTCK40
- Two pre-soaks, additional single low pressure, single high pressure applications available
- One piece rotationally molded corrosion proof MDPE tank
- Stainless steel top feed and discharge manifold
- Resource conservation system lowers water consumption
- Direct feed solutions system provides more control
- Stainless steel chemical manifold
- Stainless steel / composite direct feed chemical delivery system

Options

- Cat 3535 pump option (replaces General Pump - Emperor HTCK40)
- ESD - Extended Solution Delivery option includes: Tri-Color foam, (1) additional low pressure, (1) additional high pressure for sealant / drying agent applications
- Cold climate package - heat and weep
- Cold climate package - heat and air blow down
- Cold climate package - weep only
- Cold climate package - heat only
- Dual inlet low pressure source selection valve and control hot and cold
- Built in spot free re-pressurization system
- Reclaim system adapter kit
- Dual port injector system



HIGH VELOCITY® VEHICLE DRYING SYSTEMS

The Washworld High Velocity® Free Standing and Wall Mount Vehicle Drying Systems incorporate proven energy efficient air producer designs. All of that power wrapped in our optional dryer image package make your wash stand out from your competitors...and keep your customers coming back for more!

Standard Features

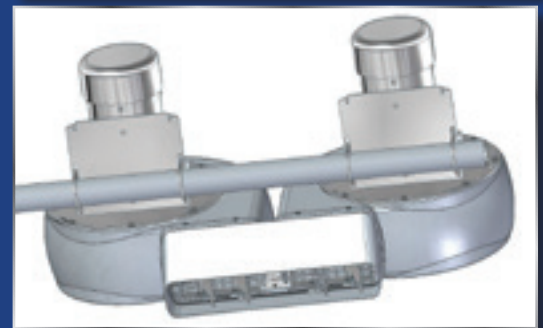
- Safe touch-free drying
- All aluminum, stainless steel and composite construction with welded impellers
- Stainless steel inlet / outlet screens
- Noncorroding composite producer housings
- Completely adjustable producer housings for enhanced drying coverage
- Stainless steel mounting hardware
- Energy efficient industrial 7.5 HP, 10 HP, or 15 HP TEFC motors

Options

- Aluminum cross beam and brackets for interior wall mount
- Powder coated aluminum frame for exterior (building face) wall mount or for interior / exterior (free standing) floor mount
- Energy conserving dryer shut-off kit
- Center producer shut off kit - When passing over the bed of a pickup truck contents of the truck bed aren't affected by the center dryers
- Sound reduction package
- Dryer image package (front / rear covers)
- Custom graphics
- LED countdown timer with stand or wall mount
- Dryer motor starter panel with stagger start controls
- VFD - Variable frequency drive motor starter control center
- Available in international voltages, including 380-415/50 Hz and 575/60 Hz

New Option Available High Velocity Oscillating Nozzle

- Performance enhancing
- Available on single and dual nozzle dryer producers
- Pneumatic cylinder controlled, no in-bay wiring, fewer moving parts
- Stainless steel diverter gate (dual gate on a single producer, quad gate on a dual producer)
- Airflow channeled in a 50 degree sweeping motion



Standard Arch
3 Producers



Standard Arch
4 Producers



Standard Arch
4 Producers, Dual
Nozzle, E-Trunks
w/ Brackets



Standard Arch
5 Producers,
E-Trunks w/
Brackets



Interior or Exterior
Wall Mount



Progressive
Drying System

RAZOR® XR-7 ON-BOARD DRYING SYSTEM

The Washworld Razor® XR-7 On-Board Vehicle Drying System provides controlled and consistent drying which results in greater customer satisfaction. The On-Board system moves together with the wash carriage while the customer's vehicle remains stationary for uniformly even drying.



Standard Features

- Consistent, controlled touch-free drying
- Stainless steel On-Board Dryer frame
- Producers are constructed from stainless steel, composites and aluminum with welded impellers
- Stainless steel inlet / outlet screens
- Three or four producer configuration
- Energy efficient, space saving design
- Totally enclosed fan cooled industrial 7.5 HP, 10 HP, or 15 HP motors
- Pre-wired and assembled Energy Chain for power supply
- On-Board drying process can initiate in either the front or rear of vehicle and can be programmed to run multiple drying passes
- On-Board Dryer can be programmed to continue operation in a fixed position as the vehicle exits for additional drying
- cETLus listed, CE compliant

Options

- Available in 4 different configurations:
 - 30 HP (4 - 7.5 HP motors)
 - 30 HP (3 - 10 HP motors)
 - 40 HP (4 - 10 HP motors)
 - 45 HP (3 - 15 HP motors)
- Dryer motor starter panel with stagger start controls
- VFD - Variable frequency drive motor starter control center
- Sound reduction package
- Custom graphics available
- Available in international voltages, including 380-415/50 Hz and 575/60 Hz
- On-Board Dryer center producer shut off kit - When passing over the bed of a pickup truck, the center producers can shut off as not to affect the contents of the truck bed. Once the truck bed is cleared, the center producers re-engage to complete the drying process.

New Option Available High Velocity Oscillating Nozzle

- Performance enhancing
- Available on single and dual nozzle dryer producers
- Pneumatic cylinder controlled, no in-bay wiring, fewer moving parts
- Stainless steel diverter gate (dual gate on a single producer, quad gate on a dual producer)
- Airflow channeled in a 50 degree sweeping motion



INSTRUCTIONAL SIGNAGE OPTIONS

Washworld offers a wide range of signage options from exterior to interior. Choices include 24v completely back-lit LED instructional signs housed in fiberglass or 12v stainless steel LED signs which are fully customizable.

12V Signs



Washworld's 12V LED signs are fabricated from stainless steel and have fully customizable sign faces. The eight panel LED signs are available with the protectant or Tri-Color foam panel. The stop / drive forward sign is available with or without wash progress, which informs the customer waiting of the estimated remaining wash time.

24V Signs



Washworld's 24V signs have a LED back-lit face with a fiberglass housing and can be customized with your logo on the bottom fiberglass portion of the sign. The eight panel LED signs are available with or without Tri-Color foam panel.

Wash Bay LED Guide Lighting



Washworld offers floor mounted guide lighting (sold in pairs) to help assist through the wash process. The guide lighting illuminates red or green in accordance with the in-bay instructional signage.

Clearance Signs



Washworld's clearance signs are available in non lit or LED back-lit. The LED back-lit clearance sign face is customizable to compliment the site's branding. Both options can be hanging or ground mounted to fit the site's needs.

WATER TREATMENT SYSTEMS

Spot Free

Standard Features

- 2400, 4800 or 7200 GPD systems (Based on 77°F incoming water supply)
- Stainless steel frame
- 4"x 40" thin film high efficiency membranes
- Mounting options:
 - Adjustable feet for floor mount
 - Stainless steel wall mount bracket for (optional) mounting
- Audible and visual alerts/alarms
- Continuous electronic TDS (totally dissolved solids) monitoring
- Activated carbon pre-filter tank with programmable automatic backwashing
- VROC digital R.O. control with TDS display
- High TDS audible alarm with adjustable setting
- Large diameter, easy to read inlet, pump and membrane pressure gauges
- Durable extruded stainless steel membrane housings
- cETLus listed, CE compliant
- Automatic inlet water shut-off valve
- Permeate (product) and concentrate (reject) flow meters
- Automatic membrane flushing
- Easily replaceable 2.5" x 20" cartridge style pre-filters on all systems
- Low pressure automatic restart
- Pre-plumbed water test port



Options

- Water storage tanks (UV rated)
- Re-pressurization pumps with mounting brackets

Spot Free R.O. Specifications

MODEL	WW 2110	WW 2111	WW 2112
GALLONS PER DAY	2400	4800	7200
NO. OF MEMBRANES	1	2	3
PUMP H.P.	1 HP	1 HP	2 HP
ELECTRICAL REQUIRED	230 VAC 1 Phase 9.6 Amps and 120 VAC 1 Phase 19.2 Amps	230 VAC 1 Phase 9.6 Amps and 120 VAC 1 Phase 19.2 Amps	230 VAC 1 Phase 13 Amps and 120 VAC 1 Phase 26 Amps

Water Softening Systems

Standard Features

- Systems from 30,000 grain capacity (single tank) to 600,000 grain capacity (twin alternating)
- Twin alternating systems provide continuous soft water 24/7
- Clack valves
- Professional series resin tanks
- Incoming operating water - pressures from 30 -100 PSI
- Incoming operating water temperatures from 35°F-100°F
- cETLus listed, CE compliant
- Simple, fully programmable controller maximizes efficiency and reduces operating costs
- Retains custom program settings in the event of power interruption
- Brine tanks sized to match system requirements
- Electronic control interlock for multiple tank synchronization
- Space saving footprint
- Noryl® composite valve body eliminates corrosion
- PVC hub and lateral distribution system



Options

- Iron filtration
- Custom, tri-plex or over-sized systems to meet your specific site needs

Water Softening System Specifications

MODEL	TYPE	SYSTEM GRAIN CAPACITY	PEAK FLOW	CU. FT. OF RESIN
WW 2100T-1	Twin Alternating	60K	14 GPM	2
WW 2101T-1	Twin Alternating	150K	17 GPM	5
WW 2102T-12	Twin Alternating	180K	33 GPM	6
WW 2103T-15	Twin Alternating	300K	62 GPM	10
WW 2104T-15	Twin Alternating	420K	62 GPM	14
WW 2105T-2	Twin Alternating	300K	85 GPM	10
WW 2106T-2	Twin Alternating	420K	85 GPM	14

Note: Specifications subject to change without notice.





Standard Features

In-Bay Wall Mount System - Stainless Steel

- Stainless steel travel rails (27' 4" overall length)
- Stainless steel wall mounting hardware
- Floor mounted blue reflectors for visual guidance
- Wash bay stop / backup loading eye wall mounting kit - Standard bays

Overhead Carriage and Trolley Frame - Laser Cut End Plates

- Variable frequency controlled belt drive carriage and trolley movement
- Stainless steel contouring spray arch with variable frequency control
- VS²® (Vehicle Sizing System)
- Virtual Attendant® - Maneuvers around wide mirrors and trailer hitches
- Visorclean - Nozzles strategically placed to clean under rear visor
- Spray arch cover - Rotationally molded polyethylene composite material
- Replaceable nozzle protector - Cross linked polyethylene foam
- Stainless steel carriage, totally enclosed climate proof motors and gearboxes with precise movement and minimal rolling resistance
- Energy Chain - No festoon, overhead cross brace or overhead swivel
- Triple pass technology for optimal front and rear cleaning

Solution Delivery System - Powder Coated Carbon Steel Pump Station

- General Pump - Emperor HTCK40 / 25 HP premium high efficiency ODP motor
- High flow multiple stage solution delivery pump system
- Composite direct injection / No drift chemical metering system
- 2 Separate pre-soak application systems
- 1 High pressure sealant / Drying agent application
- 1 Low pressure drying agent / Protectant application
- Variable flow and pressure with water conservation system

Ultimate Control Cabinet

- Electrical control panel 208VAC (soft start and stop variable frequency motor controls on carriage, trolley and arch)
- Washview® On-Site control interface (complete programming flexibility)
- Complete on-site programming and diagnostic capability
- Wash activation buy-up compatibility
- Comprehensive integrated security system
- Auto home feature



Optional Features

Razor® XR-7 System Options

- In-bay horizontal pump station with composite covers and stainless steel in-bay ultimate control cabinet option
- UCC power conversion kit (converts standard UCC for use with 240 VAC 3 phase 60 Hz incoming power supply)
- Free standing frame (stainless steel or powder coated)
- Wash bay stop / backup loading eye pedestal mounting kit - Free standing frame or non-standard bays

Wash Options

- Cat 3535 pump option (replaces General Pump - Emperor HTCK40)
- ESD - Extended Solution Delivery option without cold climate protection - Includes: Tri-Color foam, (1) additional low pressure, (1) additional high pressure for sealant/drying agent applications
- ESD - Extended Solution Delivery option with cold climate protection - Includes: Tri-Color foam with cold climate protection, (1) additional low pressure, (1) additional high pressure for sealant/drying agent applications
- Dual inlet low pressure source selection valve control hot and cold
- Medium pressure R.O. pump (13 GPM @ 110 psi) - Includes wall mount bracket and motor starter
- Cold climate package - Heat for VS²® sensors, carriage and rail travel surfaces, belt drive system, weep for arch
- Primary HS / Washview® MOBILE - High speed DSL or cable Internet connection capability - Internet access without a static IP address
- Secondary HS / Washview® MOBILE - Additional high speed DSL or cable Internet connection at same location for multi-bay sites
- Chem Alert™ - Chemical monitoring system
- Reclaim adapter (plumbing inlet and controls for external reclaim system)
- Water heater, on demand, direct vent, tank-less, natural gas (wall mount)
- Water heater, 12kw high capacity electric, stainless steel tank
- Undercarriage and Rocker Panel Blaster; 11 stainless steel nozzles; 3 on the undercarriage and 4 on each rocker panel blaster
- Undercarriage cold climate - Includes control valves and wiring on pump station
- Power Tower Wheel Cleaner® - 4 rotating nozzles per tower Available with or without blue LEDs
- Through wall stainless steel bulkhead manifold - For electrical and plumbing from mechanical room to wash bay
- Dual port injector system - To replace single injector for low pressure application (order per injector)
- Premium door controls - Includes eyes
- Ultimate door controls - Includes eyes
- LumenArch™ - More than 300 dazzling blue LEDs illuminating the spray arch during product application and while idle
- SpectraRay+™ - 5,568 LEDs (red, magenta, blue and green) Mounting options: wall, pedestal mount or OBD free standing frame
- Voice prompts



Razor® XR-7 Wall Mount Wash Bay Dimensions*

	OPTIONS	PREFERRED	*MINIMUM	MAXIMUM
HEIGHT	(All rail options) 13' 4" - 16' 8" Bay Widths 16' 9" - 18' 0" Bay Widths	12' (3658mm) 12' (3658mm)	10' 4" (3251mm) 11' 4" (3454mm)	N/A
WIDTH	27' 4" Rails (8331mm) (Standard) 30' 4" Rails (9246mm) (OBD) 25' 4" Rails (7722mm) (Optional)	15' (4572mm)	13' 4" (4064mm)	18' (5486mm)
LENGTH	25' 4" Rails (7722mm) (Optional) 27' 4" Rails (8331mm) no dryer	28' (8534mm) 30' (9144mm)	25' 8" (7874mm) 27' 8" (8484mm)	N/A
LENGTH	27' 4" Rails (8331mm) Razor® and Dryer w/Covers	42' (12802mm)	31' 4" (9550mm)	N/A
LENGTH	30' 4" Rails w/On-Board Dryer (9246mm)	42' (12802mm)	31' 4" (9550mm)	N/A

Razor® XR-7 Free Standing Frame Dimensions*

	OPTIONS	PREFERRED	*MINIMUM	MAXIMUM
HEIGHT	27' 4" Rails (8331mm) (Standard) 30' 4" Rails (9246mm) (OBD) 25' 4" Rails (7722mm) (Optional)	12' (3658mm)	11' 9" (3581mm)	N/A
WIDTH	27' 4" Rails (8331mm) (Standard) 30' 4" Rails (9246mm) (OBD) 25' 4" Rails (7722mm) (Optional)	15' (4572mm)	14' 4" (4369mm)	N/A
LENGTH	25' 4" Rails (7722mm) (Optional) 27' 4" (8331mm) no dryer	28' (8534mm) 30' (9144mm)	25' 8" (7823mm) 27' 8" (8432mm)	N/A
LENGTH	27' 4" Rails (8331mm) Razor® and Dryer w/Covers	42' (12802mm)	31' 4" (9550mm)	N/A
LENGTH	30' 4" Rails w/On-Board Dryer (9246mm)	42' (12802mm)	31' 4" (9550mm)	N/A

*NOTE: Minimum dimensions are from nearest inside obstructions entrance to exit, and bay floor to ceiling, i.e. door tracks, counterweights, etc. Add in additional length for these items.

Razor® XR-7 Utility Requirements

Water:25 GPM @ 35 PSI (2.4 bars @ 94.6 l/m) minimum at pump station

Air:11 SCFM @ 100 PSI (6.89 bars @ 311 l/m) includes optional Tri-Color foam

Electrical:208/230 VAC, 3 PH, 60Hz (Five wire, three phase with neutral and ground)

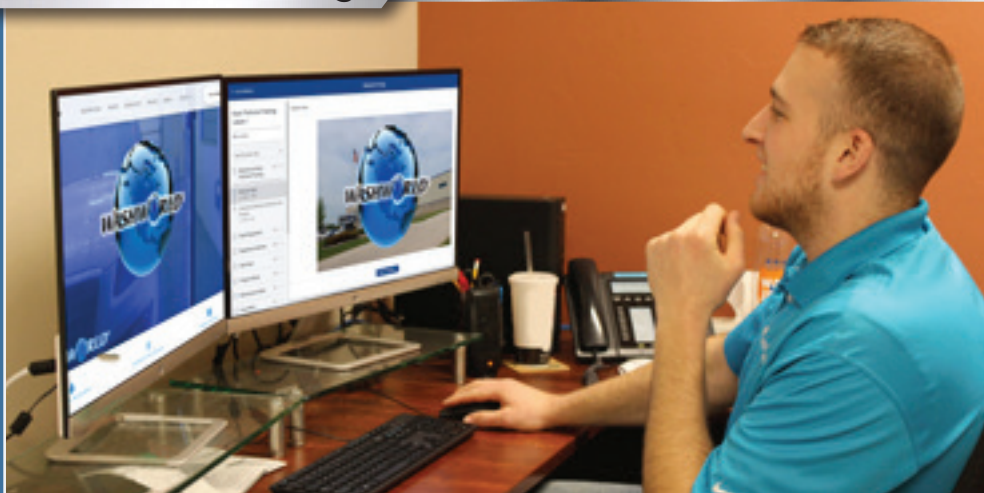
VOLTAGE	UCC CABINET	RAZOR PUMP STATION	OPTIONAL COLD CLIMATE PACKAGE	EACH DRYER MOTOR	
208	23 Amps	73 Amps	14 Amps	10 HP 27 Amps	15HP 40 Amps
230	20 Amps	62 Amps	12 Amps	10 HP 24 Amps	15HP 35 Amps
380/415 (50HZ)	17 Amps	38 Amps	10 Amps	10 HP 15 Amps	15HP 22 Amps
460	N/A	31 Amps	N/A	10 HP 12 Amps	15HP 17 Amps
575	N/A	24.5 Amps	N/A	10 HP 9.12 Amps	15HP 13.6 Amps

Note: Specifications Subject to Change Without Notice. The decibel level of the dryer (measured at 1.6 meters from the floor and 1 meter from the surface) is 94dB. The decibel level of the pump station (measured at 1.6 meters from the floor and 1 meter from the surface) is 94dB. Decibel levels are impacted by surrounding materials and conditions and will vary.



SERVICE THAT IS SECOND TO NONE!

Online Technical Training



The Washworld Customer Care Program leads the industry in customer service. Washworld takes that commitment to customer satisfaction very seriously by offering Free Online Technical Training to improve operator proficiency. The training is presented by several Washworld technicians and engineers whom have years of experience with Washworld equipment as well as the car wash industry as a whole. Some of the items covered in this comprehensive course include wash components and their function, system installation, quick reference start up, routine maintenance, Washview® programming and troubleshooting.

Technical Support



Washworld is known for our world class customer service. Our Technical Support Department can assist operators day or night, 24/7, through Washworld's exclusive Washview® Remote. Washworld's Washview Remote makes it possible for you and our technical professionals to track your wash site performance from anywhere in the world often preventing the need for an on-site service call. Best of all, there is never a charge for our customer support after the sale. At Washworld, we stand behind our vehicle wash systems and strive to provide the assistance you, our customer, need so that you're never alone. Our 24/7 technical support is yet another example of our motto, "Our World Revolves Around Your World" in action.

Replacement Parts

Keeping your vehicle wash system running is a priority for Washworld. Operators can purchase parts locally from any Washworld distributor or order factory direct for same day shipment worldwide.

*Washworld backs our equipment with a written warranty,
which sets the bar in the car wash industry. Don't take our
word for it, ask any Washworld customer!*

WASHWORLD EQUIPMENT LIMITED WARRANTY

Washworld Inc., a Wisconsin Corporation ("Washworld") warrants to the original purchaser of Washworld car wash equipment that the equipment will be free from defects in materials and workmanship for a period of 400 days from date of shipment, with the exception of the Cat Pump which is warranted for two (2) years. Claims under this warranty must be asserted in writing to Washworld within 10 days of discovery or before the end of the applicable warranty, whichever occurs first, and must follow the Washworld "RMA" (Returned Materials Authorization) process.

Any component or part alleged to be defective in materials or workmanship shall, at the option of Washworld, be returned with shipping cost prepaid. If upon examination such component or part is found to be defective in workmanship or materials, Washworld, at its option, will either repair or replace such component or part and ship such repaired or replaced component or part via standard ground. Expedited shipping costs (if requested) shall be the responsibility of purchaser. The cost of such replacement or repair (less any labor charges) shall be the exclusive remedy for any breach of any warranty and Washworld shall not be liable to any person for consequential damages for injury or commercial loss resulting from any breach of any warranty. This warranty does not cover any labor installation cost, either with respect to the original equipment or with respect to the repaired or replaced component or part which is found to be defective in workmanship or materials. Washworld does not warrant loss of income, or consequential damages, should there be any, during the time repairs are being made.

This warranty does not apply to damage resulting from components or parts that have been misused, altered, neglected, or not installed, adjusted, maintained, or used in accordance with applicable codes and ordinances and in accordance with Washworld's or manufacturer's recommendations. This warranty does not apply to damage resulting from improper operation or abuse, exceeding the rated capacities of the unit, running foreign particles or non-related solutions through pumps or valves, using acidic solutions, improper installation or maintenance, operational neglect, neglect of manufacturer's recommended maintenance, use of water containing solids in excess of twenty microns in diameter or 2000 PPM, damage caused by customer, unjustifiable nuisance calls or acts of God.

This warranty is in lieu of all other warranties, express or implied, and there are no warranties against infringement, of merchantability, of fitness for a particular purpose, or arising from course of dealing or usage of trade. Washworld shall not be liable for direct, indirect, incidental, special or consequential damages under any circumstances, including but not limited to: damage or loss resulting from inability to use the products, increased operating costs, or loss of sales, lost profits, punitive damages, or any other damages. Compliance with any laws or regulations relating to the sale, location, use or operation of the equipment, or its use in conjunction with other equipment shall be the sole responsibility of the purchaser. The rights and obligations of the parties shall be governed by the laws of the State of Wisconsin.

Washworld reserves the right to change or modify this Limited Warranty at any time without notice.





© 2020 Washworld, Inc.

2222 American Blvd. | DePere, WI 54115
920.338.9278 | 888.315.7253 | www.washworldinc.com