

WASHWORLD



WASHWORLD

PROFILE
MAX



PROFILE

PROFILE® SOFT TOUCH VEHICLE WASH SYSTEM

Washworld's Profile® is the answer to your growing car wash business. It is the soft touch system that combines Washworld's advanced technology used in our touch-free systems with the latest in washing materials. Like all of Washworld's systems, Profile was designed with emphasis on durability, simplicity of use and reduced maintenance. Profile is your profit generator!

STANDARD ON PROFILE

Stainless Steel



Without a doubt, the most durable material for use in a car wash is stainless steel. When other manufacturers are using cheaper, less durable materials in their machines, Washworld refuses to compromise on quality and uses stainless steel throughout. The stainless steel used for Profile's wall mounting system, travel rails and laser cut overhead wash carriage, ensures that Profile is the most long lasting, durable system in the industry.

Advanced Drive Motion Technology

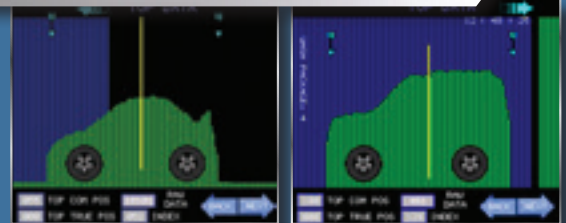
Profile's belt drive utilizes multiple variable frequency drive technology with a clean and simple design. The dual side wash media is belt driven with independent movement while the variable frequency drive controls the side and top wash media to ensure a smooth operation and a precise application of all solutions and water. What does this mean for you? Fewer moving components, less weight, reduced maintenance and a quicker return on investment!

Energy Chain



Profile's innovative cable carrier protects moving cables and hoses from abrasion and entanglement. Energy Chain also provides a controlled bend radius of cables and hoses to prevent pinching or kinking. Energy Chain's non-metallic construction ensures quiet performance, longer cable life and extended supply line life.

Digital Surface Profile (DSP)



Washworld's exclusive DSP - Digital Surface Profile system is the advanced method of reading a vehicle's contours to allow for the most precise cleaning possible. Utilizing 3D imaging, DSP enables Profile to adjust for various vehicle surfaces to deliver a wash that reaches every angle with Profile's super soft polyethylene foam wash media. Profile's Clean Rinse System keeps the wash media from retaining dirt and debris which results in the best possible customer experience. The DSP System offers consistent length, width and height measuring of vehicles for optimal product application and cleaning by Profile. This ensures that products are applied to the vehicle not the floor, which saves money and reduces wash times by customizing the travel distance of the Profile based on the length of each individual vehicle.

VS²® - Vehicle Sizing System



Especially important when positioning vehicles within a soft touch vehicle wash bay, Washworld's Vehicle Sizing System (VS²®), with precise loading feature, utilizes advanced software coupled with photo eye technology to provide a safe and reliable means of positioning the vehicle in the wash bay. This eliminates the need for floor mounted treadle plates or wheel stops, resulting in a significant reduction in wiring and fewer components to maintain.

Buy-Up Option

The buy-up option allows your Auto Cashier to up-sell for you. Four customizable buy-ups are available for greater wash package flexibility and maximized profits!

PROFILE® WITH QUALITY BUILT IN

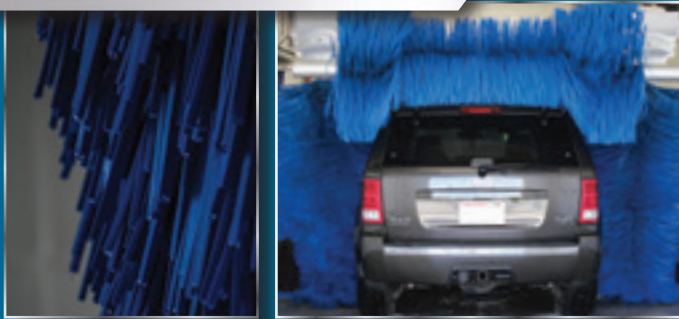
STANDARD ON PROFILE

Flex Pass® Dual Application System



Also standard on Profile is Washworld's Flex Pass® dual application system. This stainless steel, angled flood style pods and overhead 6 nozzle stainless steel manifold applies up to 8 different applications to the entire vehicle (top, sides, front and rear). The Flex Pass application system is mounted on both the entrance and exit side of the Profile carriage. This allows for two product applications to be applied to the vehicle in a single pass. Applications can be programmed from front to rear or rear to front to minimize machine movement. The speeds are adjustable individually in both directions which expedites the wash process to increase the throughput of cars, which in turn translates into greater profits for you!

Innovative Wash Media



Profile's super soft blue side and top polyethylene foam wash media comes equipped with Clean Rinse, Washworld's wash media cleaning and lubricating system.

Reduced Maintenance

Sealed gearboxes eliminate the need for oil changes. Reduced weight and less motion equal less wear and tear. High quality premium components and materials withstand harsh wash bay conditions for longer life.

Eye Catching LED's



For can't miss customer attraction, brilliant blue LEDs illuminate Profile's high gloss composite wash carriage cover. Dual 10" long green and red LEDs line the entrance side cover combined with audible voice prompts that coincide with the in-bay instructional signage help to position the vehicle in the wash bay. Even when idle, the red and green LEDs can sequence to draw attention to the wash bay with an eye-catching light show.

Washview® On-Site



WASHVIEW
ON-SITE

Waterproof hand held RF remote control for manual movement and machine functions

With Profile's standard Washview® On-Site, a color touch screen gives you complete access to Profile including programming, maintenance, diagnostics, and wash counts. No on-site PC or laptop is needed to configure your wash. Profile also features a comprehensive integrated security system which can monitor auto cashiers, doors, fluid levels and more. In addition, the Wash Package Storage capability allows for up to 12 wash packages to be retained which can be quickly copied to the immediate wash setup.



NEW INNOVATIONS FOR INCREASED PROFITABILITY

OPTIONAL ON PROFILE

Power Tower Wheel Cleaner®



Effective wheel cleaning that will keep your customers coming back! The 40" high tower features 4 stainless steel zero degree rotating turbo nozzles, providing intense cleaning as well as great customer appeal. Power Tower Wheel Cleaner manifolds are fabricated completely from stainless steel and wrapped in a vibrant blue, rotationally molded polyethylene cover. Available with or without eye-catching blue LEDs. Not only is the Power Tower Wheel Cleaner effective for wheel cleaning, but it is great for removing snow and ice from rocker panels and running boards!

Big Shot™



Big Shot chemical tire applicator is constructed from stainless steel and specifically designed to target your tires/wheels for impeccable results. Pre-charged solution and air manifolds are photo-eye activated and software controlled with customizable settings. Two application towers with 3 applicator nozzles on each tower per side (driver and passenger side) provide complete coverage. Top and bottom nozzles have a 10-degree angle adapter for precise application adjustment. Each application tower can deliver a different tire/wheel cleaning product (high pH and low pH) or a dual application of the same product. No matter what size tires, Big Shot has it covered!

SpectraRay+™



SpectraRay+™ works in conjunction with SpectraRay™ to take the spectacular LED light show to the next level! SpectraRay+ includes an adjustable stainless steel stationary wall mounted system, bringing the intense light show to eye level. When purchased as a stand alone option, SpectraRay+ is fully programmable. The colors can sequence through flashing colors for an intense experience, switch to a steady color at any point to coincide with your wash package and even coordinate with your in-bay instruction sign. When paired together, SpectraRay+ and SpectraRay synchronize to flood the wash bay with red, magenta, blue and green creating an ultimate light show that customers won't forget!

Chem Alert™



Monitoring your chemical levels has never been easier! Washworld's chemical monitoring system allows you to remotely monitor up to 16 different product levels by utilizing an adjustable capacitive sensor that is mounted to each chemical container. The adjustable low level triggers an alert on the Washview® and a notification is conveniently sent via email or text. Monitoring your chemical levels helps you to reduce system downtime and ensures your car wash is running smoothly.

THE PROOF OF ANY SYSTEM IS HOW WELL IT CLEANS

Washworld has consistently been on the cutting edge of wash technology. At Washworld, we are continually striving to provide technologies that improve the efficiency and quality of our wash systems while keeping them simple to operate and maintain. With Profile's wash media guided by DSP, your customers' vehicles receive optimal cleaning.

O P T I O N A L O N P R O F I L E

Washview® Mobile



WASHVIEW
—MOBILE

Washworld's optional Washview® Mobile provides virtually the same technologies as Washview® On-Site (standard), however it allows you to access and control Profile from anywhere in the world via a high speed Internet connection. Washview Mobile uses the Vijeo Design'Air app (purchased separately) for your smart phone or tablet to give you mirror image access of your HMI. It even gives you the ability to receive text or email notifications to keep you fully informed!

Undercarriage & Rocker Panel Blaster

The undercarriage and rocker panel blaster is specially designed to thoroughly attack any dirt, debris and snow on the lower portion of your vehicle. For use with WW9150 high pressure pump option, the undercarriage and rocker panel blaster consists of 11 stainless steel nozzles; 3 on the undercarriage and 4 on each rocker panel blaster. For use with non high pressure systems, it consists of a medium pressure 5 hole undercarriage manifold.

Touch-Free Power Wheel Detailer™



POWER
WHEEL DETAILER

Washworld's Touch-Free Power Wheel Detailer® combines tire chemical application, high pressure nozzles and rapid wheel blasters for better than hand applied results. Profile's DSP (Digital Surface Profile) identifies the size and location of the tires for a precise wheel blast every time! Additionally, when traveling along the vehicle during the high pressure rinse, the front facing side nozzles will activate to give your mirrors a deep clean.

Touch Power Wheel Detailer™



POWER
WHEEL DETAILER

Washworld's Touch Power Wheel Detailer® combines tire chemical application, high pressure nozzles and a soft yet durable wash media for sparkling clean results. Profile's DSP (Digital Surface Profile) identifies the size and location of the tires. The wash media rotates clockwise and counterclockwise for a precise clean every time. (Not available with Profile On-Board Dryer)



STAND OUT FROM THE COMPETITION

From the minute your customers drive into your wash bay, they will see that Profile is a different kind of soft wash. Profile's wall mounted system keeps the machine up off the floor and creates an open and inviting wash bay. High gloss composite wash carriage and side wash media covers with sleek graphics and LED lighting give Profile a clean and refined look.

OPTIONAL ON PROFILE

Foam 'n Flow®



More show, more shine, more revenue with Washworld's Foam 'n Flow® application system! It produces high end results for extra profit generation. Fully LED lit, Foam 'n Flow can be used with most Carnauba, hot wax, polish and conditioning products on the market.

Bug A'Salt™



Washworld is launching an all out war on bugs and salt residue with our extra step vehicle preparation Bug A'Salt. This unique concentrated attack targets bugs and salt film on the windshield, bumper and front grill which leaves vehicles cleaner and your customers happier. (Standard on Profile MAX / Optional on Profile ST)

Tri-Color Foam



There is simply no better Tri-Color foam application available! Washworld's Tri-Color foam features completely adjustable nozzles for coverage the way you want it, where you want it. Foaming heads can be positioned individually allowing unlimited flexibility.

SpectraRay™

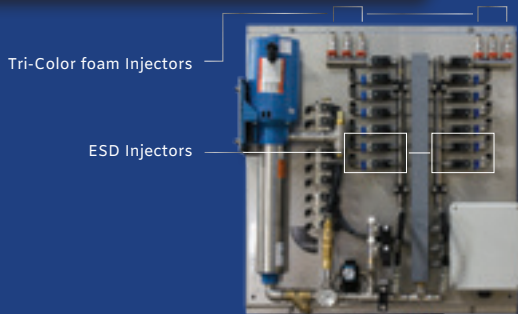


A spectacular array of 4,528 LEDs fill the wash bay with SpectraRay! The red, magenta, blue and green LEDs are fully programmable to add splashes of various colors during any or all of the product applications to accentuate the entire wash process. The colors can sequence through flashing colors for an intense experience, switch to a steady color at any point to coincide with your wash package and even coordinate with your in-bay instruction sign. Even when idle, SpectraRay can sequence through color to draw attention to the wash bay with an eye catching light show making it unique and memorable for perspective customers!

SOLUTION DELIVERY SYSTEM (SDS)

Profile's Solution Delivery System comes loaded with standard features. For locations without an equipment room, the In-Bay Pump Station offers the same cutting edge technology incorporated in a space saving design to be located directly in your wash bay. Featuring one piece heavy duty construction, it is designed for long life in even the harshest of conditions.

Medium Pressure SDS



Standard Features

- Wall mounted stainless steel pump panel
- 8 Composite direct injectors (Profile® ST) / 12 injectors (Profile® MAX)
- In-bay temperature monitoring system
- Separate simultaneous application system has the ability to apply 2 different product applications at the same time
- Direct feed solutions system provides more control
- Stainless steel chemical manifold
- Stainless steel / composite direct feed chemical delivery system
- Flex Pass® dual application system

Options

- Extended solution delivery (ESD) including Bug A'Salt™ technology, tire wheel injector and 2 additional applications (optional on Profile ST, standard on Profile MAX)
- Tri-Color foam application system
- Spot free re-pressurization pump
- Foam 'n Flow® application system

Ultra Compact High Pressure Delivery System



Standard Features

- Space saving design, simple installation, easy to maintain
- Heavy duty powder coated frame utilizes proven protective primer
- Cat 2530 Pump - Variable pressure, up to 1,200 PSI, 25 GPM
- One piece rotationally molded corrosion proof MDPE tank
- Electronic control valve / capacitive tank level sensor

In-Bay Pump Station



Standard Features

- Simple to install, space saving design: 37"H x 96"L x 26"D
- Deluxe cover package with enclosed base protects equipment and looks great in your bay
- Removable panels allow for complete access and easy maintenance
- Heavy duty powder coated frame utilizes proven protective primer
- Cat 2530 Pump - Variable pressure, up to 1,200 PSI, 25 GPM
- Deluxe oil change kit allows easy access for service
- 8 Composite direct injectors (Profile® ST), 12 injectors (Profile® MAX)
- One piece rotationally molded corrosion proof MDPE tank
- Stainless steel top feed and discharge manifold
- Direct feed solutions system provides more control
- Stainless steel chemical manifold
- Stainless steel / composite direct feed chemical delivery system
- Flex Pass® dual application system

Options

- Tri-Color foam application system
- Foam 'n Flow® application system
- Built in spot free re-pressurization system
- Reclaim system adapter kit
- Built in high capacity 12kw electric water heater



HIGH VELOCITY® VEHICLE DRYING SYSTEMS

The Washworld High Velocity® Free Standing and Wall Mount Vehicle Drying Systems incorporate proven energy efficient air producer designs. All of that power wrapped in our optional dryer image package make your wash stand out from your competitors...and keep your customers coming back for more!

Standard Features

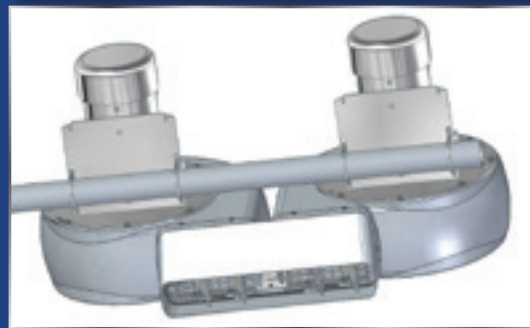
- Safe touch-free drying
- All aluminum, stainless steel and composite construction with welded impellers
- Stainless steel inlet / outlet screens
- Noncorroding composite producer housings
- Completely adjustable producer housings for enhanced drying coverage
- Stainless steel mounting hardware
- Energy efficient industrial 7.5 HP, 10 HP, or 15 HP TEFC motors

Options

- Aluminum cross beam and brackets for interior wall mount
- Powder coated aluminum frame for exterior (building face) wall mount or for interior / exterior (free standing) floor mount
- Energy conserving dryer shut-off kit
- Center producer shut off kit - When passing over the bed of a pickup truck contents of the truck bed aren't affected by the center dryers
- Sound reduction package
- Dryer image package (front / rear covers)
- Custom graphics
- LED countdown timer with stand or wall mount
- Dryer motor starter panel with stagger start controls
- VFD - Variable frequency drive motor starter control center
- Available in international voltages, including 380-415/50 Hz and 575/60 Hz

New Option Available High Velocity Oscillating Nozzle

- Performance enhancing
- Available on single and dual nozzle dryer producers
- Pneumatic cylinder controlled, no in-bay wiring, fewer moving parts
- Stainless steel diverter gate (dual gate on a single producer, quad gate on a dual producer)
- Airflow channeled in a 50 degree sweeping motion



Standard Arch
3 Producers



Standard Arch
4 Producers



Standard Arch
4 Producers, Dual
Nozzle, E-Trunks
w/ Brackets



Standard Arch
5 Producers,
E-Trunks w/
Brackets



Interior or Exterior
Wall Mount



Progressive
Drying System

PROFILE® ON-BOARD DRYING SYSTEM

The Washworld Profile® On-Board Vehicle Drying System provides controlled and consistent drying which results in greater customer satisfaction. The On-Board system is integrated with the wash carriage while the customer's vehicle remains stationary for uniformly even drying. Where wash bay space is limited or for noise abatement, the On-Board Drying System is the answer!



40 HP Optional On-Board Dryer Features

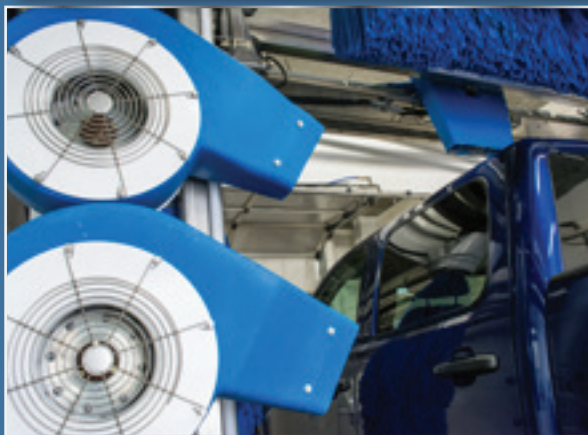
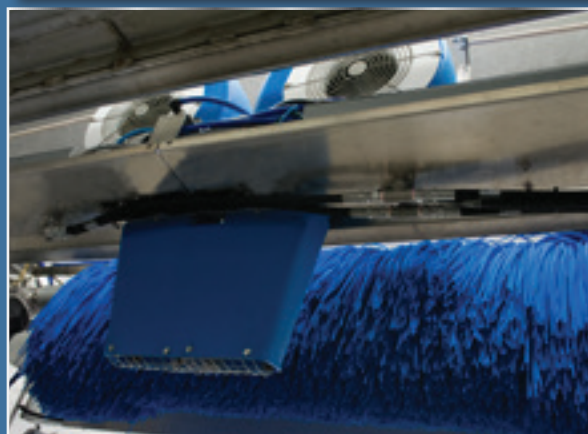
- Available on Profile® ST and Profile® MAX
- Consistent, controlled touch-free drying
- Producers are constructed from stainless steel, composites and aluminum with welded impellers
- Powder coated aluminum inlet cone and producer back plate / motor mount
- Stainless steel inlet / outlet screens
- 6 producer configuration - (4) 5 HP aluminum / composite producer housing (sides), (2) 10 HP aluminum producer configuration (top)
- Energy efficient, space saving design
- Totally enclosed fan cooled industrial 5 HP and 10 HP motors
- Pre-wired and assembled Energy Chain for power supply
- On-Board drying process can initiate in either the front or rear of vehicle and can be programmed to run multiple drying passes
- On-Board Dryer can be programmed to continue operation in a fixed position as the vehicle exits for additional drying
- cETLus listed, CE compliant

30 HP Optional On-Board Dryer Features

- Available on Profile® ST and Profile® MAX
- Consistent, controlled touch-free drying
- Producers are constructed from stainless steel, composites and aluminum with welded impellers
- Powder coated aluminum inlet cone and producer back plate / motor mount
- Stainless steel inlet / outlet screens
- Six producer configuration
- Energy efficient, space saving design
- (6) 5 HP aluminum / composite producer housing (sides and top)
- Totally enclosed fan cooled industrial 5 HP motors
- Pre-wired and assembled Energy Chain for power supply
- On-Board drying process can initiate in either the front or rear of vehicle and can be programmed to run multiple drying passes
- On-Board Dryer can be programmed to continue operation in a fixed position as the vehicle exits for additional drying
- cETLus listed, CE compliant

Options

- Stagger start motor control center
- VFD - Variable frequency drive motor starter control center
- Sound reduction package
- Available in international voltages, including 380-415/50 Hz and 575/60 Hz
- Center producer shut off kit (for open bed trucks)



INSTRUCTIONAL SIGNAGE OPTIONS

Washworld offers a wide range of signage options from exterior to interior. Choices include 24v completely back-lit LED instructional signs housed in fiberglass or 12v stainless steel LED signs which are fully customizable.

12V Signs



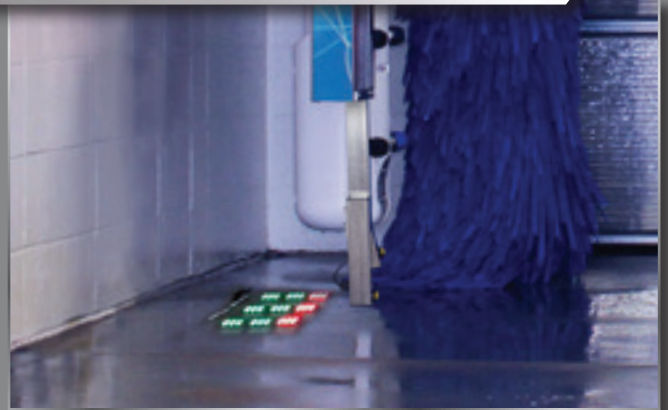
Washworld's 12V LED signs are fabricated from stainless steel and have fully customizable sign faces. The eight panel LED signs are available with or without Tri-Color foam panel. The stop/drive forward sign is available with our without wash progress, which informs the customer waiting of the estimated remaining wait time.

24V Signs



Washworld's 24V signs have a LED back-lit face with a fiberglass housing and can be customized with your logo on the bottom fiberglass portion of the sign. The eight panel LED signs are available with or without Tri-Color foam panel.

Wash Bay LED Guide Lighting



Washworld offers floor mounted guide lighting (sold in pairs) to help assist through the wash process. The guide lighting illuminates red or green in accordance with the in-bay instructional signage.

Clearance Signs



Washworld's clearance signs are available in non lit or LED back-lit. The LED back-lit clearance sign face is customizable to compliment the site's branding. Both options can be hanging or ground mounted to fit the site's needs.

WATER TREATMENT SYSTEMS

Spot Free Reverse Osmosis

Standard Features

- 2400, 4800 or 7200 GPD systems (Based on 77°F incoming water supply)
- Stainless steel frame
- 4"x 40" thin film high efficiency membranes
- Mounting options:
 - Adjustable feet for floor mount
 - Stainless steel wall mount bracket for (optional) mounting
- Audible and visual alerts/alarms
- Continuous electronic TDS (totally dissolved solids) monitoring
- Activated carbon pre-filter tank with programmable automatic backwashing
- VROC digital R.O. control with TDS display
- High TDS audible alarm with adjustable setting
- Large diameter, easy to read inlet, pump and membrane pressure gauges
- Durable extruded stainless steel membrane housings
- cETLus listed, CE compliant
- Automatic inlet water shut-off valve
- Permeate (product) and concentrate (reject) flow meters
- Automatic membrane flushing
- Easily replaceable 2.5" x 20" cartridge style pre-filters on all systems
- Low pressure automatic restart
- Pre-plumbed water test port



Options

- Water storage tanks (UV rated)
- Re-pressurization pumps with mounting brackets

Spot Free R.O. Specifications

MODEL	WW 2110	WW 2111	WW 2112
GALLONS PER DAY	2400	4800	7200
NO. OF MEMBRANES	1	2	3
PUMP H.P.	1 HP	1 HP	2 HP
ELECTRICAL REQUIRED	230 VAC 1 Phase 9.6 Amps and 120 VAC 1 Phase 19.2 Amps	230 VAC 1 Phase 9.6 Amps and 120 VAC 1 Phase 19.2 Amps	230 VAC 1 Phase 13 Amps and 120 VAC 1 Phase 26 Amps

Water Softening Systems

Standard Features

- Systems from 30,000 grain capacity (single tank) to 600,000 grain capacity (twin alternating)
- Twin alternating systems provide continuous soft water 24/7
- Clack valves
- Professional series resin tanks
- Incoming operating water - pressures from 30 -100 PSI
- Incoming operating water temperatures from 35°F-100°F
- cETLus listed, CE compliant
- Simple, fully programmable controller maximizes efficiency and reduces operating costs
- Retains custom program settings in the event of power interruption
- Brine tanks sized to match system requirements
- Electronic control interlock for multiple tank synchronization
- Space saving footprint
- Noryl® composite valve body eliminates corrosion
- PVC hub and lateral distribution system



Options

- Iron filtration
- Custom, tri-plex or over-sized systems to meet your specific site needs

Water Softening System Specifications

MODEL	TYPE	SYSTEM GRAIN CAPACITY	PEAK FLOW	CU. FT. OF RESIN
WW 2100T-1	Twin Alternating	60K	14 GPM	2
WW 2101T-1	Twin Alternating	150K	17 GPM	5
WW 2102T-12	Twin Alternating	180K	33 GPM	6
WW 2103T-15	Twin Alternating	300K	62 GPM	10
WW 2104T-15	Twin Alternating	420K	62 GPM	14
WW 2105T-2	Twin Alternating	300K	85 GPM	10
WW 2106T-2	Twin Alternating	420K	85 GPM	14

Note: Specifications subject to change without notice.





Standard Features

In-Bay Wall Mount System - Stainless Steel

- Stainless steel travel rails (34' 0" overall length)
- Stainless steel wall mounting hardware
- Floor mounted blue reflectors for visual guidance
- Wash bay stop / backup loading eye wall mounting kit - Standard bays

Overhead Carriage and Trolley Frame - Laser Cut Stainless Steel

- High gloss composite wash carriage and side wash media covers with blue LED accent lighting on entrance carriage cover
- Dual 10" long red and green LEDs mounted on entrance cover
- Variable frequency controlled belt drive carriage and trolley movements
- VS²® (Vehicle Sizing System)
- DSP (Digital Surface Profile) technology
- Composite Energy Chain for electrical and solution distribution
- Super soft blue polyethylene foam wash media (side and top)
- Clean Rinse System - Wash media cleaning and lubricating system
- Stainless steel carriage, climate proof motors and gearboxes
- Flex Pass® dual application system
- Mirror detailer - Cleans both sides of mirrors in a single pass
- Side brush exchange

Solution Delivery System (SDS) / Wall Mounted Stainless Steel

- Multiple stage solution delivery pump system (capable of 225psi)
- Wall mounted stainless steel pump panel
- 8 composite direct injectors (Profile® ST)
- 12 composite direct injectors (Profile® MAX)
- In-bay temperature monitoring system
- Direct feed solutions system provides more control
- Medium pressure rinse capability

Ultimate Control Cabinet

- Electrical control panel 208VAC (VFD controls on seven motors)
- Washview® On-Site control interface (complete programming flexibility)
- Complete on-site programming and diagnostic capability
- Wash activation buy-up compatibility
- Comprehensive integrated security system
- In-bay voice module to communicate Profile® actions to customer
- Waterproof hand held RF remote control for manual movement and machine functions
- Up to 12 wash packages can be saved and quickly copied to current wash packages
- Auto home feature



Additional Standard Features

Extended Solution Delivery (ESD) includes Bug A'Salt™ technology, tire wheel injector and 2 additional applications

High Pressure Delivery System - Ultra Compact Pump Station



Optional Features

Undercarriage Wash Manifold Options

- Undercarriage and Rocker Panel Blaster - 11 stainless steel nozzles; 3 on the undercarriage and 4 on each rocker panel blaster (for use with WW9150 high pressure pump option)
- Medium pressure 5 hole undercarriage manifold (for use with non high pressure systems)
- Power Tower Wheel Cleaner® - 4 rotating nozzles per tower - Available with or without blue LEDs
- Big Shot™ - Chemical tire application

Profile System Options

- 30 HP (6 - 5 HP motors) On-Board Dryer
- 40 HP (4 - 5 HP motors and 2 - 10 HP motors) On-Board Dryer
- In-bay horizontal pump station with composite covers and in-bay stainless steel ultimate control cabinet
- UCC power conversion kit (converts standard UCC for use with 240 VAC 3 phase 60 Hz incoming power supply)
- Free standing frame (stainless steel or powder coated)
- Wash bay stop / backup loading eye pedestal mounting kit - Free standing frame or non-standard bays

Wash Options

- Tri-Color foam application system - both entrance & exit
- Foam 'n Flow® application system
- Medium pressure R.O. pump (13 GPM @ 110 psi) includes wall mount bracket and motor starter
- Spot free (R.O.) reject water reclaim system
- Reclaim system adapter kit
- Primary HS / Washview® MOBILE - High speed DSL or cable Internet connection capability - Internet access without a static IP address
- Secondary HS / Washview® MOBILE - Additional high speed DSL or cable Internet connection at same location for multi-bay sites
- Chem Alert™ - Chemical monitoring system
- Custom voice option for in-bay voice module
- Dual port injector system - To replace single injector for low pressure application (order per injector)
- Premium door controls - Includes eyes
- Ultimate door controls - Includes eyes
- Touch or Touch-Free Power Wheel Detailer® (requires optional high pressure pump)
- SpectraRay™ - 4,528 LED lights - red, magenta, blue and green light show during the wash process or while idle
- SpectraRay+™ - 5,568 LEDs (red, magenta, blue and green) mounting options: wall, pedestal mount or OBD free stading frame
- Blow down - protects against hose and major component damage during freezing temperatures



Optional Features

Extended Solution Delivery (ESD) - Includes Bug A'Salt™ technology, tire wheel injector and 2 additional medium pressure applications

High Pressure Option - Ultra Compact Pump Station



Profile® Wall Mount Wash Bay Dimensions*

	OPTIONS	PREFERRED	*MINIMUM	MAXIMUM
HEIGHT* Standard & 30 HP OBD	15' 4" - 16' 8" Bay Widths 16' 8" - 18' 0" Bay Widths	12' (3658mm) 12' (3658mm)	11' (3353mm) 11' 4" (3454mm)	N/A
HEIGHT* 40 HP OBD ONLY**	15' 4" - 16' 8" Bay Widths 16' 8" - 18' 0" Bay Widths	12' (3658mm) 12' (3658mm)	11' 6" (3505mm) 11' 10" (3607mm)	N/A
WIDTH*	15' 4" - 18' 0" Bay Widths	16' (4877mm)	15' 4" (4672.5mm)	18' (5486mm)
LENGTH*	34' Rails (10363mm) (Standard)	40' (12192mm)	37' 4" (11378mm)	N/A
LENGTH*	34' Rails (10363mm) Profile® and Dryer w/Covers	45' (13716mm)	41' 6" (12649mm)	N/A

Profile® Free Standing Frame Dimensions*

	OPTIONS	PREFERRED	*MINIMUM	MAXIMUM
HEIGHT* Standard & 30 HP OBD	11' 6" (3502mm) (Frame)	12' (3658mm)	11' 8" (3556mm)	N/A
HEIGHT* 40 HP OBD ONLY**	12' (3658mm) (Frame)	12' 6" (3810mm)	12' 2" (3708mm)	N/A
WIDTH*	16' Width (Frame)	16' 6" (5029mm)	16' (4877mm)	N/A
LENGTH*	34' Rails (10363mm) (Standard)	40' (12192mm)	37' 4" (11378mm)	N/A
LENGTH*	34' Rails (10363mm) Profile® and Dryer w/Covers	45' (13716mm)	41' 6" (12649mm)	N/A

*NOTE: Minimum dimensions are from nearest inside obstructions entrance to exit and bay floor to ceiling, i.e. door tracks, counterweights, bay lights, etc. Add in additional length for these items.

**IMPORTANT: The 40 horsepower on-board dryer option requires 6" of additional height clearance (top dual 10 HP dryers). The standard Profile and 30 horsepower on-board dryer option require the clearances listed above.

Profile® Minimum Utility Requirements

Utility Requirements for standard Profile ST does not include options or other equipment requirements

Water:15 GPM @ 40 PSI (56.7 l/m @ 2.75 bars) 1" supply

Air:13 SCFM @ 40 PSI (3681/m @ 2.75 bars) includes optional Tri-Color foam

Electrical:208/230 VAC, 3 PH, 60 Hz (Five wire, three phase with neutral and ground)

VOLTAGE	UCC CABINET	PROFILE HIGH PRESSURE PUMP STATION	EACH DRYER MOTOR		ADD FOR EACH ON-BOARD DRYER MOTOR (6 TOTAL) 5HP
208 VAC	33 Amps	41 Amps	10 HP 27 Amps	15HP 40 Amps	13.7 Amps
230 VAC	30 Amps	37 Amps	10 HP 24 Amps	15HP 35 Amps	12.4 Amps

*NOTE: Specifications Subject to Change Without Notice. The decibel level of the dryer (measured at 1.6 meters from the floor and 1 meter from the surface) is 94dB. The decibel level of the pump station measured at 1.6 meters from the floor and 1 meter from the surface) is 84dB for high pressure and 72dB for low pressure. Decibel levels are impacted by surrounding materials and conditions therefore will vary.



SERVICE THAT IS SECOND TO NONE!

Online Technical Training



The Washworld Customer Care Program leads the industry in customer service. Washworld takes that commitment to customer satisfaction very seriously by offering Free Online Technical Training to improve operator proficiency. The training is presented by several Washworld technicians and engineers whom have years of experience with Washworld equipment as well as the car wash industry as a whole. Some of the items covered in this comprehensive course include wash components and their function, system installation, quick reference start up, routine maintenance, Washview® programming and troubleshooting.

Technical Support



Washworld is known for our world class customer service. Our Technical Support Department can assist operators day or night, 24/7, through Washworld's exclusive Washview® Remote. Washworld's Washview Remote makes it possible for you and our technical professionals to track your wash site performance from anywhere in the world often preventing the need for an on-site service call. Best of all, there is never a charge for our customer support after the sale. At Washworld, we stand behind our vehicle wash systems and strive to provide the assistance you, our customer, need so that you're never alone. Our 24/7 technical support is yet another example of our motto, "Our World Revolves Around Your World" in action.

Replacement Parts

Keeping your vehicle wash system running is a priority for Washworld. Operators can purchase parts locally from any Washworld distributor or order factory direct for same day shipment worldwide.

***Washworld backs our equipment with a written warranty,
which sets the bar in the car wash industry. Don't take our
word for it, ask any Washworld customer!***

WASHWORLD EQUIPMENT LIMITED WARRANTY

Washworld Inc., a Wisconsin Corporation ("Washworld") warrants to the original purchaser of Washworld car wash equipment that the equipment will be free from defects in materials and workmanship for a period of 400 days from date of shipment, with the exception of the Cat Pump which is warranted for two (2) years. Claims under this warranty must be asserted in writing to Washworld within 10 days of discovery or before the end of the applicable warranty, whichever occurs first, and must follow the Washworld "RMA" (Returned Materials Authorization) process.

Any component or part alleged to be defective in materials or workmanship shall, at the option of Washworld, be returned with shipping cost prepaid. If upon examination such component or part is found to be defective in workmanship or materials, Washworld, at its option, will either repair or replace such component or part and ship such repaired or replaced component or part via standard ground. Expedited shipping costs (if requested) shall be the responsibility of purchaser. The cost of such replacement or repair (less any labor charges) shall be the exclusive remedy for any breach of any warranty and Washworld shall not be liable to any person for consequential damages for injury or commercial loss resulting from any breach of any warranty. This warranty does not cover any labor installation cost, either with respect to the original equipment or with respect to the repaired or replaced component or part which is found to be defective in workmanship or materials. Washworld does not warrant loss of income, or consequential damages, should there be any, during the time repairs are being made.

This warranty does not apply to damage resulting from components or parts that have been misused, altered, neglected, or not installed, adjusted, maintained, or used in accordance with applicable codes and ordinances and in accordance with Washworld's or manufacturer's recommendations. This warranty does not apply to damage resulting from improper operation or abuse, exceeding the rated capacities of the unit, running foreign particles or non-related solutions through pumps or valves, using acidic solutions, improper installation or maintenance, operational neglect, neglect of manufacturer's recommended maintenance, use of water containing solids in excess of twenty microns in diameter or 2000 PPM, damage caused by customer, unjustifiable nuisance calls or acts of God.

This warranty is in lieu of all other warranties, express or implied, and there are no warranties against infringement, of merchantability, of fitness for a particular purpose, or arising from course of dealing or usage of trade. Washworld shall not be liable for direct, indirect, incidental, special or consequential damages under any circumstances, including but not limited to: damage or loss resulting from inability to use the products, increased operating costs, or loss of sales, lost profits, punitive damages, or any other damages. Compliance with any laws or regulations relating to the sale, location, use or operation of the equipment, or its use in conjunction with other equipment shall be the sole responsibility of the purchaser. The rights and obligations of the parties shall be governed by the laws of the State of Wisconsin.

Washworld reserves the right to change or modify this Limited Warranty at any time without notice.





© 2020 Washworld, Inc.

2222 American Blvd. | DePere, WI 54115
920.338.9278 | 888.315.7253 | www.washworldinc.com